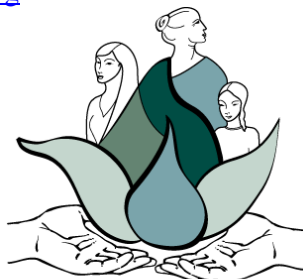


Contact: Trina Fischer  
PR & Marketing Director  
347-228-6438, [trina@lookingforlilith.org](mailto:trina@lookingforlilith.org)

FOR IMMEDIATE RELEASE



LOOKING FOR LILITH  
*Theatre Company*

---

**Looking for Lilith Celebrates -Women's History Month  
with Play by Kentucky Writer**

Looking for Lilith brings Arlene Hutton's elegant exploration of Kentucky's Shaker sect to the stage with its signature integration of music and movement into this closely-researched script. Set in Harrodsburg Kentucky's Pleasant Hill during the 1830's revival period, Hutton's script focuses on nine women, including a handful of newcomers to the community who have ecstatic experiences, claiming to see angels. "Hutton asks some universal questions about the nature of community and belief that are timeless. . ." states American Theatre. The Herald says the play is " ...powerful and insightful...a thought-provoking piece, the message being that often we need not look as far as heaven to see angels here on earth...".

LFL produces this play as a tribute to a fascinating time in Kentucky's history seen through the eyes of a particular group of women. As the playwright herself says, "This production means a lot to me -- celebrating Women's History Month, being produced at Looking for Lilith and bringing my Shaker characters back to Kentucky!"

***As It Is In Heaven***

by Arlene Hutton

Black Box Theatre, Wyatt Center for the Arts  
Bellarmine University  
2001 Newburg Road

February 26, 27, 28, 7:30 PM

March 2\*, 5, 6, 7, 7:30 PM

March 7 Matinee at 2:00PM

Tickets: \$18 General, \$15 Student/Senior

\*March 2 matinee is the Discounted Community Performance Night

Directed by Kathi E.B. Ellis, this production showcases an ensemble of skilled performers, including Looking for Lilith company members Shannon Woolley Allison, Trina Fischer, Ebony Nolana Jordan, and Karole Spangler, long-time collaborators Jill Marie Schierbaum and Olivia Thompson, and LFL newcomers Jamie Shannon and April Singer. Costumes design is by another frequent collaborator Lindsay Chamberlin.

*The Kentucky Arts Council, the state arts agency, provides operating support to Looking for Lilith with state tax dollars and federal funding from the National Endowment for the Arts.*

**LOOKING FOR LILITH THEATRE COMPANY** is a Louisville, KY based not-for-profit, ensemble theatre company, founded in New York City in 2001 by Shannon Woolley Allison and Trina Fischer, both Louisville, Kentucky natives, along with Jennifer Thalman Kepler of Winchester, VA. The mission of this company is to present plays that re-examine history through women's perspectives, mainly via the collaborative creation of original theatre based on research. The company has grown to include Kathi E. B. Ellis, Sara G. B. Canary, Typh Hainer Merwarth, Kelly Mc Nerney and company associates Karole Spangler, Laura Ellis, Dawn Schulz, Holly Stone and Ebony Jordan. LFL is on the touring rosters of the Kentucky Arts Council, the Kentucky Center for the Arts and Alternate ROOTS. They are members of 1741: A Collaboratory for Social Innovation, Theatre Alliance of Louisville, Kentucky Theatre Association, The American Alliance for Theatre and Education, and the Network of Ensemble Theatres. LFL received the 2010 Karen Willis Award from the Kentucky Theatre Association for artistic excellence and commitment to changing Kentucky through theatre, was voted 2nd in Best Theatre Group in Louisville in Louisville's A-List Voting for 2013, and has won the ICWP 50/50 Applause Award for the past 2 seasons.

For more info about LFL, visit:  
<http://www.lookingforlilith.org/>  
or contact Trina Fischer, PR and Marketing Director,  
at 347-228-6438 or [trina@lookingforlilith.org](mailto:trina@lookingforlilith.org)  
###